

USE CASE ELEVATED TEMPERATURE DETECTION

Safe Stadiums

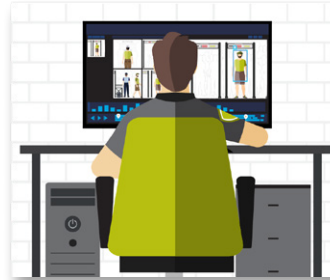
Operational View



DETECT

ELEVATED TEMPERATURE DETECTED

A thermal camera at a security checkpoint detects a fan with an indication of elevated body temperature and automatically alerts the security operations center.



ANALYZE

TEMPERATURE ALERT VERIFIED

The security operations center acknowledges the alert and identifies the visitor with an indication of elevated body temperature.



COMMUNICATE

RESOURCES DISPATCHED

Agents at the entrance point are notified of the individual and a medical professional is dispatched to the checkpoint.



RESPOND

SITUATION RESOLVED

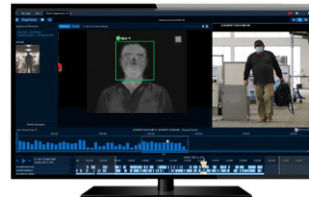
The fan is discreetly isolated and a medical screening is conducted and an incident report is logged with pre-populated fields and relevant data.

Technology View



DETECT

- Avigilon Video Security Cameras
- Avigilon Control Center
- Elevated Temperature Detection
- Orchestrate



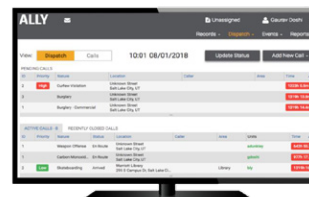
ANALYZE

- Avigilon Video Security Cameras
- Avigilon Control Center



COMMUNICATE

- Radio Communications: Voice & Multimedia
- WAVE PTX: Multimedia Sharing & Broadband Push-to-Talk
- Avtec Dispatch Software



RESPOND

- Ally Incident Management



*Camera footage is for illustrative purposes only

Motorola Solutions, Inc. 500 West Monroe Street, Chicago, IL 60661 U.S.A. motorolasolutions.com

MOTOROLA, MOTO, MOTOROLA SOLUTIONS and the Stylized M Logo are trademarks or registered trademarks of Motorola Trademark Holdings, LLC and are used under license. All other trademarks are the property of their respective owners. © 2021 Motorola Solutions, Inc. All rights reserved. 12-2021 [CK04]